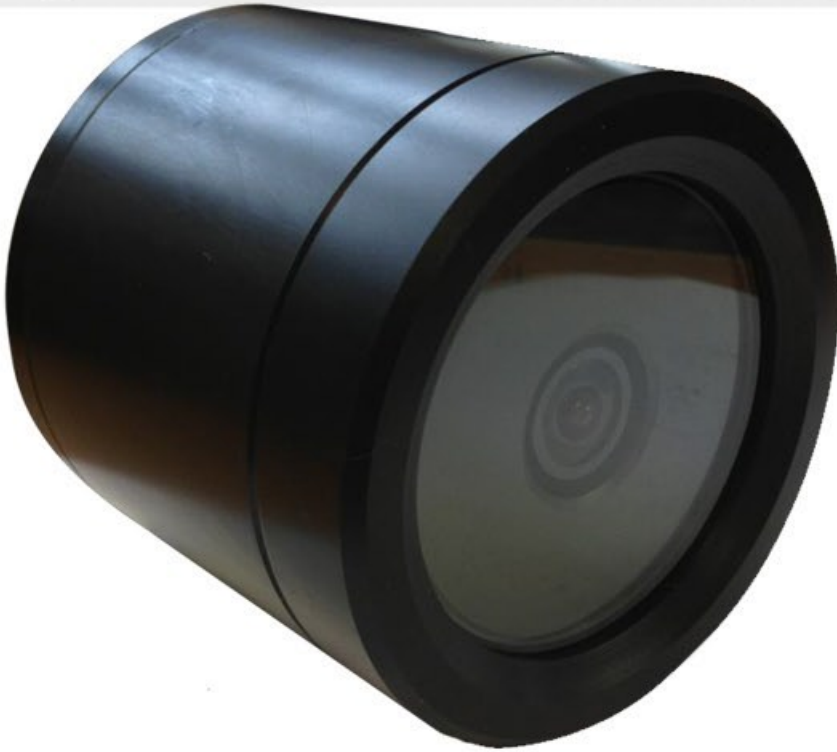




ROVTECH SOLUTIONS

Harsh Environment Problem Solvers



RSL Seacam Ultra Wide Angle Camera

The Seacam Camera is a wide angle camera and a robust camera used at the Sellafield Site where it has had long term exposure to high pH levels and background radioactivity. In the Oil and Gas Sector, the camera has been used extensively mounted on Remotely Operated Vehicles and Rig Inspection Systems

The Camera can be made from Acetyl (as pictured above) or Stainless Steel. The focus can be set at a client specified distance or can be left at infinity giving good detail.

The specification can be adapted for specific Client requirements, depending on the use. The standard model is rated to 100m.

RSL can also fit a ring of LEDs to the internal face giving an integral solution

Specification:

750 TVL High Resolution Colour
Digital Processing
0.09 Lux Low Light Sensitivity
160° Diagonal Angle of View in air
114° Angle of View in water
Internal Line Drivers
Lightweight Acetyl Housing
12-24 DC Operation
Internal Video Fuse
Reverse Polarity Protection
Ø82 mm
85mm Length

Rovtech Solutions
Unit 16, Andrews Court
Andrews Way
Barrow in Furness
Cumbria
LA14 2UE

+44(0)1229 822121
info@rovtechsolutions.co.uk
rovtechsolutions.co.uk